

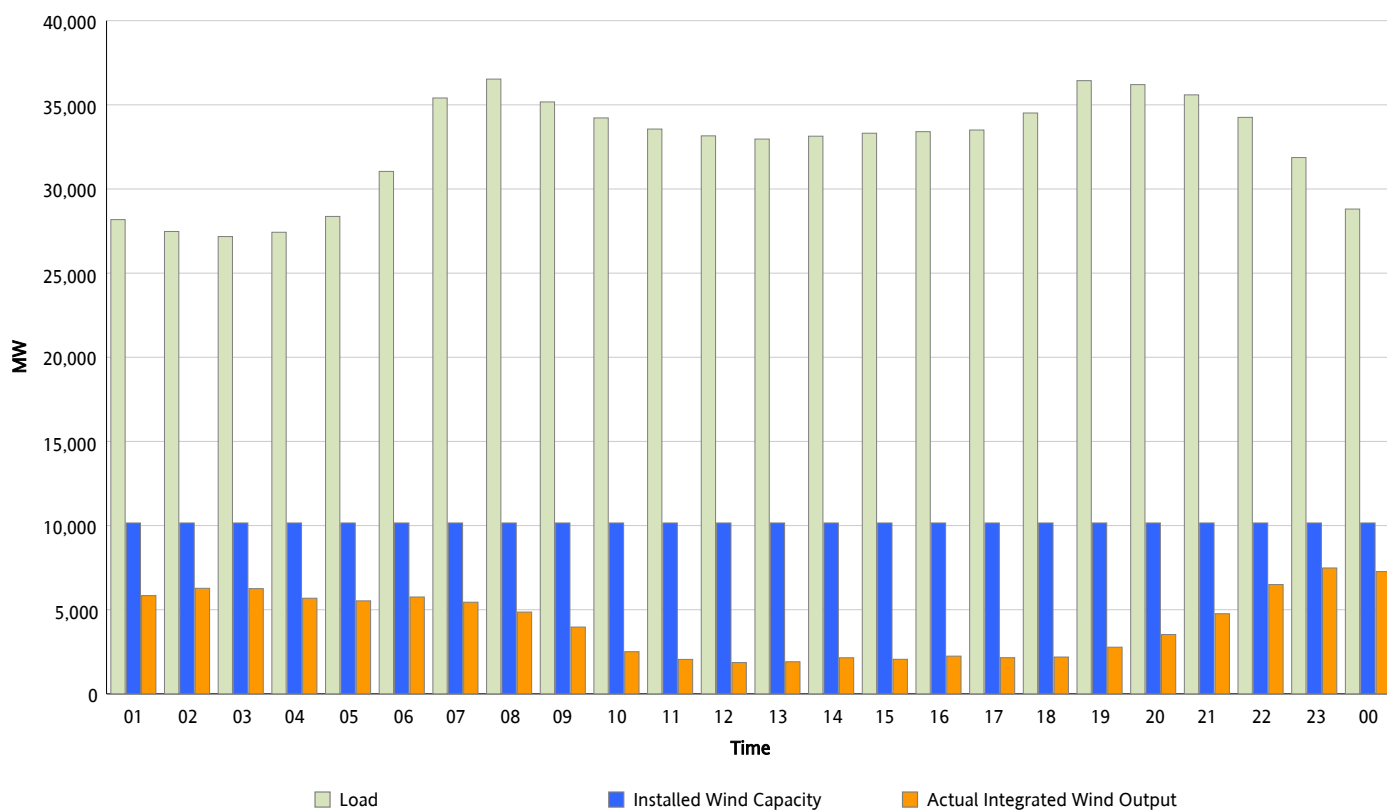


ERCOT Grid Operations

Wind Integration Report : 12/18/2012

Peak Load	36,529 MW
Load Peak Hour (HE)	08
Wind Over Peak	4,860 MW
Wind Record 11/10/12	8,521 MW
Max Wind Value*	7,653 MW
Wind Peak Time	22:55
Wind Integration %	24.99 %

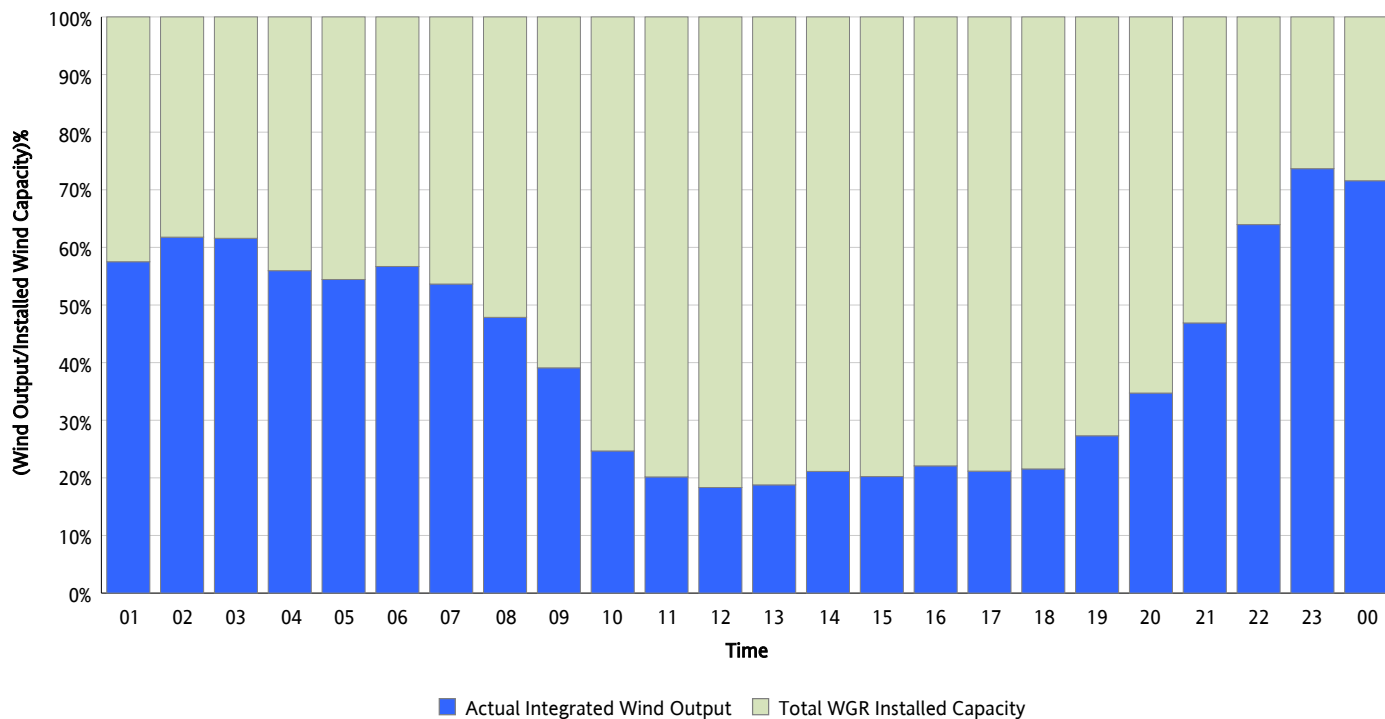
Hourly Average Actual Load vs. Actual Wind Output
12/18/2012



* Wind Record and Wind Max represent instantaneous values and the rest of the values are integrated over the hour

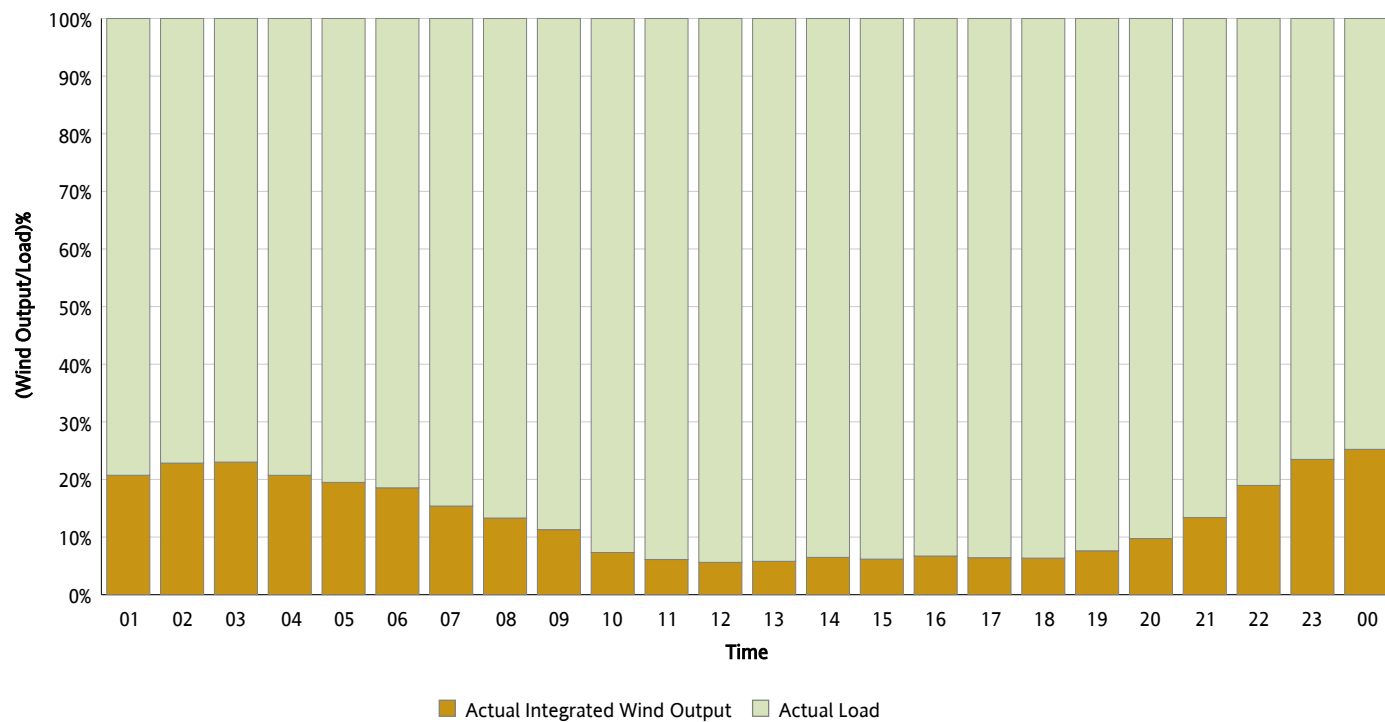
Actual Wind Output as a Percentage of the Total Installed Wind Capacity

12/18/2012



Actual Wind Output as a Percentage of the ERCOT Load

12/18/2012



ERCOT Load vs. Actual Wind Output

12/11/2012 - 12/18/2012

